

**UC San Diego**  
**MOORES CANCER CENTER**  
An NCI-designated Comprehensive Cancer Center

Find a Doctor  
Appointments & Referrals  
Contact Us | 858-657-7000

Cancer Treatment | Cancer Types | Patient Resources | Clinical Trials | About Us

Search Cancer Site

Home / Research & Training / Shared Resources / Biorepository and Tissue Technology

Share

**Research & Training**

- Registration
- Biorepository and Tissue Technology
- Biostatistics
- DNA Sequencing
- Flow Cytometry
- Histology and Immunohistochemistry
- In Vivo Imaging
- Laser Capture Microdissection
- Microarray
- Microscopy
- Nutrition
- Radiation Medicine
- Transgenic Core and Embryonic Stem Cell

### Biorepository and Tissue Technology

**Director**  
Scott VandenBerg, MD, PhD

**Co-Director**  
Richard Schwab, MD

**Contact**  
Email: [ccbr@ad.ucsd.edu](mailto:ccbr@ad.ucsd.edu)

**Service Profile**

The Biorepository contains plasma, serum, RNA stabilized buffy coat, urine, viable tumor samples, and formalin-fixed paraffin-embedded tumor — all with associated clinical information. These can be provided to investigators with Cancer Sample Banking Committee approval. (IRB approval is also required for projects requesting ongoing sample collection or clinical annotation.) Urine and blood-derived specimens are available from a wide variety of cancer cases and cancer-free controls. Tumor sample availability is more limited. Samples are collected from consented subjects, and de-identified clinical information on the subjects is available. Subjects are consented for research germ line genotyping. Access to the clinical annotation is determined based on need as justified in each investigator's request or protocol.

Anonymized samples from the biorepository are available compliant with UC San Diego HRPP exempt category 4.

For projects requiring ongoing sample collection or clinical annotation, Human Subjects Research Review is required. For outside users, the biorepository can assist with identifying a UC San Diego clinical investigator to collaborate on this process.

**Sharmeela Kaushal, PhD**  
**Biorepository Manager**  
**Email: [ccbr@ad.ucsd.edu](mailto:ccbr@ad.ucsd.edu)**

UC San Diego Health System

858-657-7000

Patient Services  
Locations & Directions  
Appointments  
Find a Doctor  
About Us  
Contact Us

Specialties & Programs  
Cancer Types A-Z  
Cancer Care Centers  
Support Services  
Healthy Eating Program

Clinical Trials  
Clinical Trials Search  
About the Clinical Trials  
Office

For Health Professionals  
Refer a Patient  
Find a Clinical Trial  
MCC Faculty & Staff

Cancer Services Locations  
Moore's Cancer Center  
Thornton Hospital  
All Cancer Service Locations

# BIOSPECIMEN REQUESTS REQUIRE PREPLANNING

## TISSUE BIOSPECIMENS REQUIRE THE MOST TIME

### PREPARATION FOR TISSUE REQUEST

COMPLETE INITIAL TISSUE REQUEST FORM




### Contact Biorepository Manager

Initial Discussion of Request

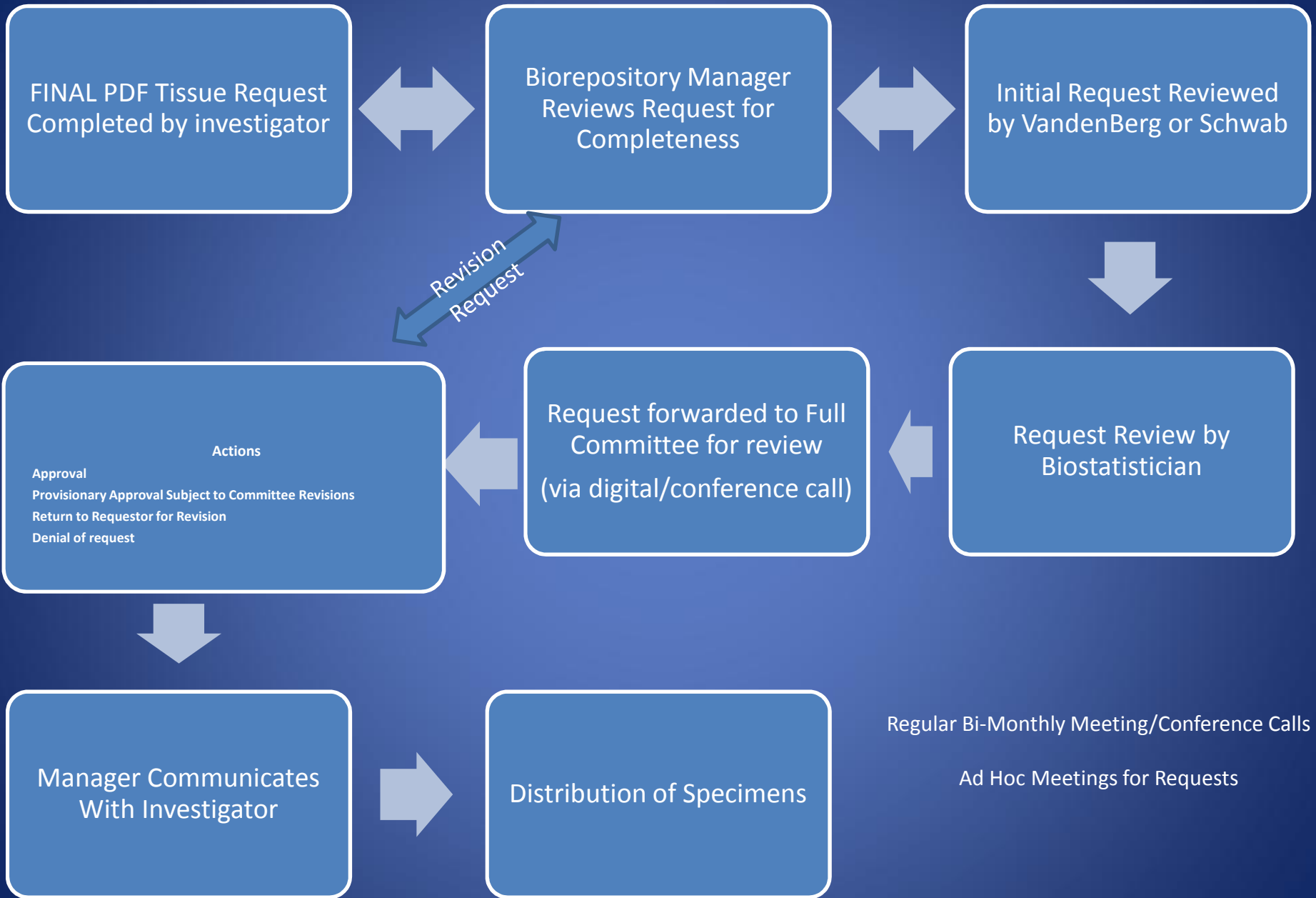


### Meet With Dr. Vandenberg & Team

To Discuss Optimal Tissue Types & Study Feasibility  **PREPARE FINAL REQUEST PDF**

## Data Elements of Biospecimen Request in PDF format

- Project Title, Abstract & Specific Aims
- Any MCC or other C3 collaborating investigators
- **\*\*Biospecimen Type Requested for each disease site/tumor type**
  - 1) tissue-frozen, FFPE, viable
  - 2) blood-serum, plasma, buffy coat
  - 3) urine
  - 4) saliva
- Amount/Sample, Number of Samples/Cases for each tumor type/disease site
- Funding Source:
  - Intramural/Institutional
  - NIH Research Grant
  - NIH Career Development Award
  - NIH Research Training and Fellowship Awards
  - NIH Program Project/Center Grants
  - CIRM Grant
  - CA Discovery Grant
  - Industry Sponsored/Clinical Trial Funding



# Criteria For Committee Review

- Overall Scientific Merit/Relevance
- Quality of Research Relevant for Current/Future Funding
- Urgent Clinical Trial/Translational Research/Biomarker Development
- Collaborations with Cancer Center Members
- Demand/Rarity of Specific Tissue Types & Biostatistical Relevance
  - coordination/sharing of sample analytes
- Prior Inventory Commitments/Targeted Prospective Specific Acquisitions (Funded R01/P01/P50)
- IRB approval (may be necessary but not sufficient)

# Obligations of Biorepository Use

- **Acknowledge use of the Moores Cancer Center BTTSR and cite the CCSG Grant P30CA23100** in all presentations and publications that describe data derived from the biospecimen or tissue technology resources.
- Report back to the BTTSR all specimen uses – histology/morphologic analysis, genomics/epigenomics, gene expression, proteomics, *etc.* (not specific data) and whether there are residual analytes.
- Do not transfer the biospecimen or its analytes to third parties.